

JFS

BEIJING JOINT FLOW SYSTEM CO.



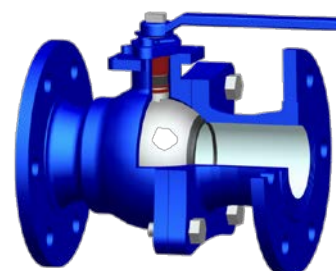
BALL VALVE



FLOATING BALL VALVE

FEATURE

- Anti-static.
- Replaceable PTFE seat rings
- Foolproof position indication at a glance, with or without operator fitted
- Every valve production-tested
- Wide range of standard accessories.
- If required, replacement of seats and seals can be achieved quickly and easily, thus minimizing down-time.
- Rotary operation reduces emissions dramatically compared with those of conventional linear valves with standard packing.



STANDARD

Design and Manufacture	API 608/BS 5351/ASME B16.34/API 6D
Inspection and Testing	API 598/API 6D/BS 5146
Face to Face Dimension	ISO 5752/EN 558/DIN 3202/ASME B16.10/API 6D
Flange Dimension	ASME B16.5/ASME B16.47/ISO 7005/EN 1092

*More standard specifications are available on request.

TEST DATA

Nominal Diameter DN (mm)	8-200 (1/4"-8")						
Nominal Pressure PN (MPa)	1.0	1.6	2.5	4.0	150lb	300lb	600lb
Hydraulic Shell Test Pressure (MPa)	1.5	2.4	3.75	6.0	3.0	7.5	16.5
Hydraulic Seal Test Pressure (MPa)	1.1	1.76	2.75	4.4	2.2	5.5	12.1
Temperature (°C)	0~80						

*More test specifications are available on request.

FLOATING BALL VALVE

FEATURE

Unconditional fire-safe provision

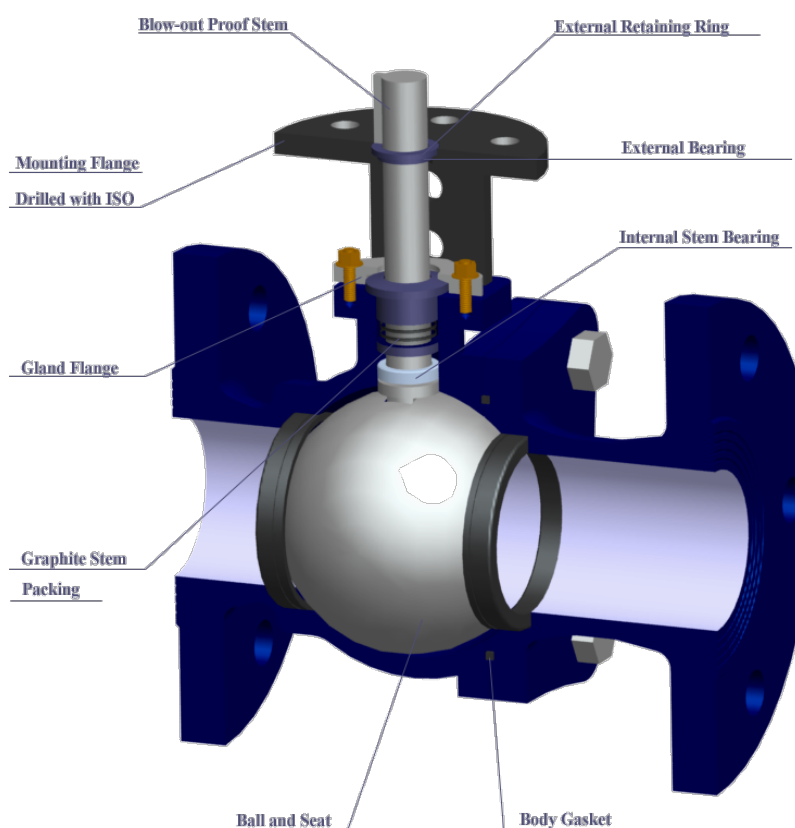
While metal or hard graphite seats are extremely heat resistant, other sealing components such as gland packing and flange gaskets are made of flexible graphite, another heat resistant material, so that no part of the valve will be affected by extraordinarily heated environments.

Maintenance ease

Split body construction of the valve body provides the convenience of easy maintenance, a critical requirement for handling slurries and other viscous fluids.

Valve automation

Quarter-turn valve drive mechanism makes mounting of valve automation measures such as electric and pneumatic actuators technically easier.



High flow efficiency

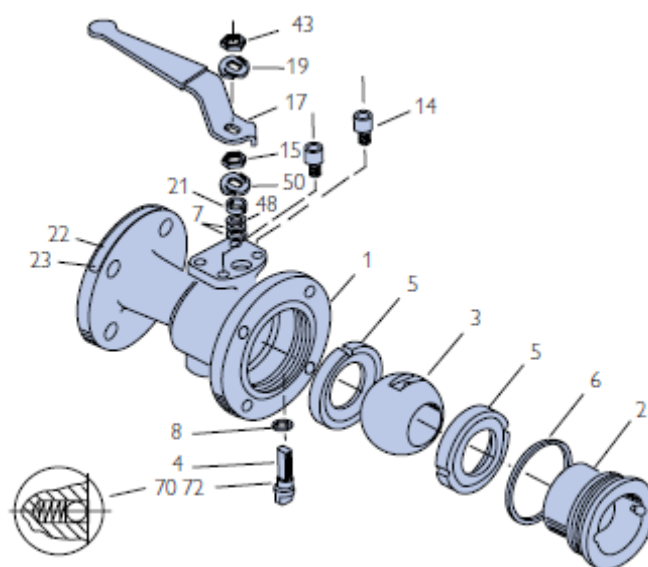
Full port design provides maximized and linearized flow characteristics with minimized pressure loss while the line flow travels through the valve bore. This is a design requirement particularly important for trouble-free service of slurries and other viscous fluids.

Metal seated ball valve

Rigid construction with fully metallic contact between the ball and seats, and high durability of trim materials make metal seated ball ideally suited to highly abrasive services handling slurries and other viscous fluids.

FLOATING BALL VALVE

PARTS LIST & MATERIAL

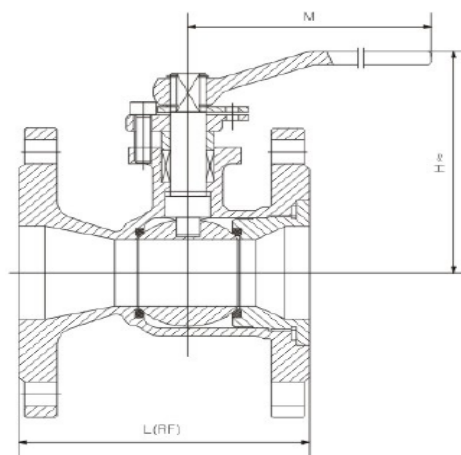


Item	Parts Name	Material
1	Body	WCB/Stainless Steel/Alloy Steel
2	Insert	Carbon Steel/Stainless Steel
3	Ball	WCB/Stainless Steel/Alloy Steel
4	Stem	WCB/Stainless Steel/Alloy Steel
5	Seat Ring	PTFE/RPTFE
6	Body Seal	PTFE/RPTFE
7	Gland Packing	Graphite/PTFE
8	Thrust Bearing	PTFE
14	Stop Screw	Carbon Steel
15	Gland Nut	Carbon Steel
17	Handle	Carbon Steel
19	Stem Stop Washer	Stainless Steel
21	Gland	Carbon Steel
43	Handle Nut	Carbon Steel
48	Thrust Washer	PTFE
50	Stem Stop Washer	Stainless Steel
70	Anti-Static Spring	Stainless Steel
72	Anti-Static Ball	Stainless Steel

*More material specifications are available on request.

FLOATING BALL VALVE

DIMENSION (One-piece / 150 & 300 lb)



DN	NPS	150 lb			300 lb		
		L	H≈	M≈	L	H≈	M≈
40	1-1/2"	165	96	160	191	100	160
50	2"	178	118	200	216	120	200
65	2-1/2"	191	125	250	241	142	250
80	3"	203	147	250	283	147	250
100	4"	229	153	350	305	163	350
150	6"	394	204	400	403	210	400
200	8"	457	342	750	502	366	-

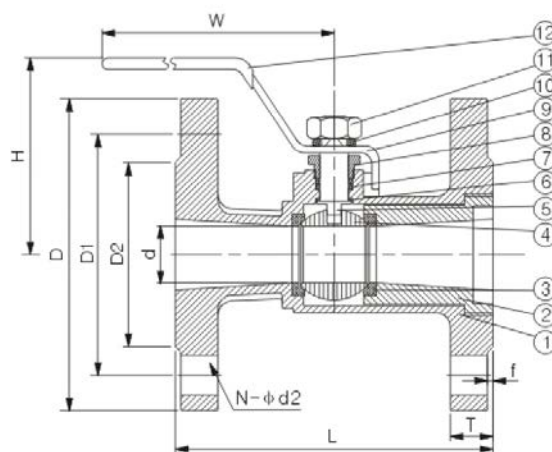
*Face to face dimensions (L) herein are according to ASME B16.10.

*Flange dimensions refer to Catalogue of Accessory: Series 8 – Flange.

*More dimension specifications are available on request.

FLOATING BALL VALVE

DIMENSION (One-piece / 1.0 & 1.6 MPa)



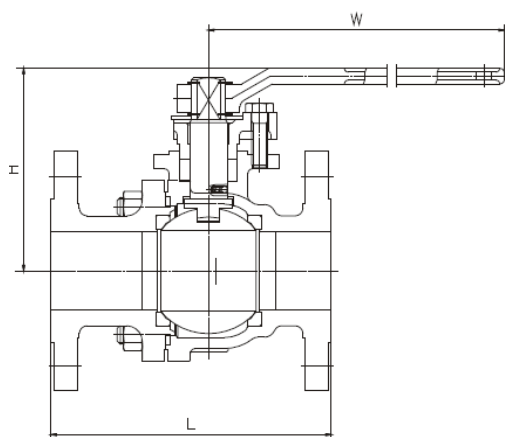
DN	NPS	L	d	W≈	H≈
15	1/2"	92	10.3	125	65
20	3/4"	105	13	135	75
25	1"	110	17	135	87
32	1-1/4"	125	22	147	90
40	1-1/2"	135	25	180	95
50	2"	155	32	180	110
65	2-1/2"	170	40	200	120
80	3"	200	50	230	130
100	4"	230	64	240	150

*Flange dimensions refer to Catalogue of Accessory: Series 8 – Flange.

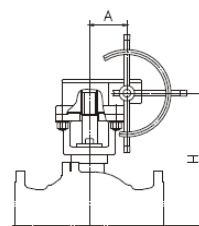
*More dimension specifications are available on request.

FLOATING BALL VALVE

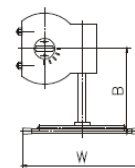
DIMENSION (Two-piece / 150 & 300 lb)



(1/2"-4")



(6"-10")



DN	NPS	150 Lb			300 Lb		
		L	H≈	W≈	L	H≈	W≈
15	1/2"	108	73	130	140	73	130
20	3/4"	117	76	130	152	76	130
25	1"	127	86	160	165	86	160
32	1 1/4"	140	91	160	178	91	160
40	1 1/2"	165	119	200	190	119	200
50	2"	178	127	200	216	127	200
65	2-1/2"	190	136	200	241	136	200
80	3"	203	164	325	283	164	325
100	4"	229	178	325	305	178	325
150	6"	394	325	750	403	366	800
200	8"	457	415	750	502	440	800
250	10"	533	475	750	568	-	-

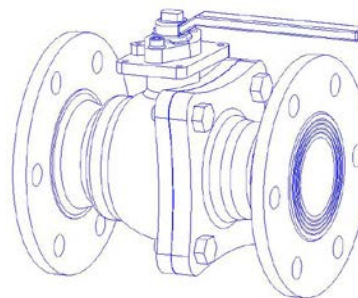
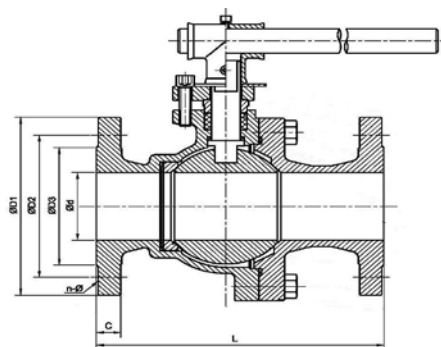
*Face to face dimensions (L) herein are according to ASME B16.10.

*Flange dimensions refer to Catalogue of Accessory: Series 8 – Flange.

*More dimension specifications are available on request.

FLOATING BALL VALVE

DIMENSION (Two-piece / 1.6, 2.5 & 4.0 MPa)



DN	NPS	PN16			PN25			PN40		
		L	H≈	W≈	L	H≈	W≈	L	H≈	W≈
15	1/2"	130	60	108	130	160	240	130	60	40
20	3/4"	140	64	120	140	205	270	140	65	51
25	1"	150	90	165	150	215	350	150	90	58
32	1 1/4"	165	105	180	165	230	400	180	105	66
40	1 1/2"	180	150	240	180	270	500	200	175	76
50	2"	200	190	240	216	300	600	220	230	88
65	2 1/2"	220	195	320	241	340	900	250	250	110
80	3"	250	215	350	283	400	1100	280	250	121
100	4"	280	250	400	-	-	-	320	295	150
125	5"	320	280	500	-	-	-	400	330	176
150	6"	360	320	600	-	-	-	400	375	204
200	8"	400	370	800	-	-	-	550	440	260

*Face to face dimensions (L) herein are according to ISO 5752.

*Flange dimensions refer to Catalogue of Accessory: Series 8 – Flange.

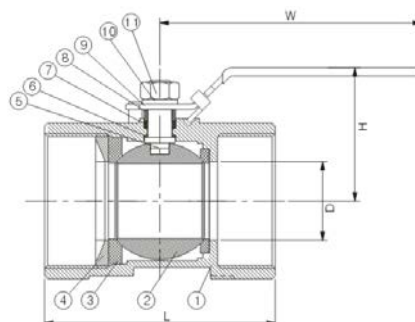
*More dimension specifications are available on request.

FLOATING BALL VALVE

◆ Female Thread End

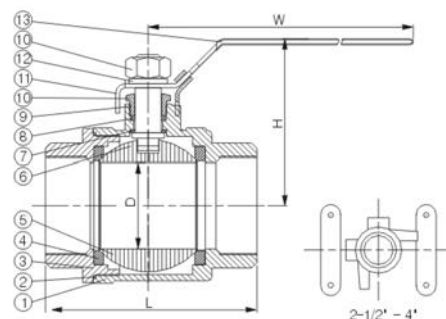
DIMENSION (One-piece)

DN	NPS	L	W≈	H≈
15	1/2"	75	105	54
20	3/4"	80	105	63
25	1"	90	125	63
32	1 1/4"	110	140	84.5
40	1 1/2"	120	162	93
50	2"	140	162	101.5
65	2 1/2"	185	215	120
80	3"	205	224	125
100	4"	240	251	180



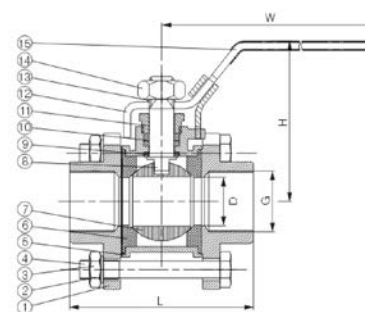
DIMENSION (Two-piece)

DN	NPS	L	W≈	H≈
8	1/4"	53.5	93	51
10	3/8"	53.5	93	51
15	1/2"	62	93	55.5
20	3/4"	74	110	59
25	1"	87	125	68.5
32	1 1/4"	105	145	75
40	1 1/2"	108	170	86
50	2"	125	170	96
65	2 1/2"	154	210	127.5
80	3"	177.5	240	134
100	4"	228	314	160



DIMENSION (Three-piece)

DN	NPS	L	W≈	H≈
15	1/2"	75	105	54
20	3/4"	80	105	63
25	1"	90	125	63
32	1 1/4"	110	140	84.5
40	1 1/2"	120	162	93
50	2"	140	162	101.5
65	2 1/2"	185	215	120
80	3"	205	224	125
100	4"	240	251	180



*More dimension specifications are available on request.

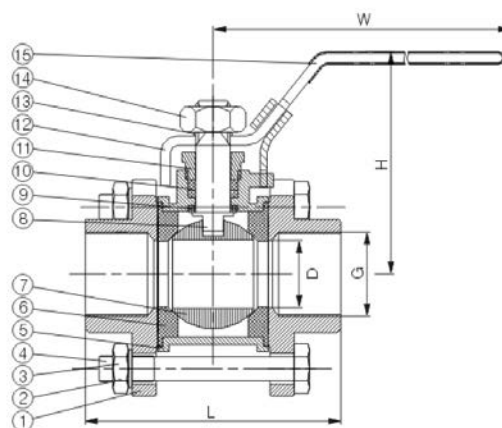
FLOATING BALL VALVE

◆ Socket Weld End

PARTS LIST & MATERIAL

Item	Parts Name	Material
1	Cap	Carbon Steel/Stainless Steel
2	Bolt Washer	Stainless Steel
3	Hex Nut	Stainless Steel
4	Bolt	Stainless Steel
5	Body	Carbon Steel/Stainless Steel
6	Seat	PTFE
7	Ball	Stainless Steel
8	Stem	Stainless Steel
9	Thrust Washer	PTFE
10	Packing	PTFE
11	Gland	Stainless Steel
12	Handle	Stainless Steel
13	Spring Washer	Stainless Steel
14	Stem Nut	Stainless Steel
15	Plastic Cover	Plastic

*More material specifications are available on request.



DIMENSION (Three-piece)

DN	NPS	L	W≈	≈H
15	1/2"	75	105	54
20	3/4"	80	105	63
25	1"	90	125	63
32	1 1/4"	110	140	84.5
40	1 1/2"	120	162	93
50	2"	140	162	101.5
65	2 1/2"	185	215	120
80	3"	205	224	125
100	4"	240	251	180

*More dimension specifications are available on request.

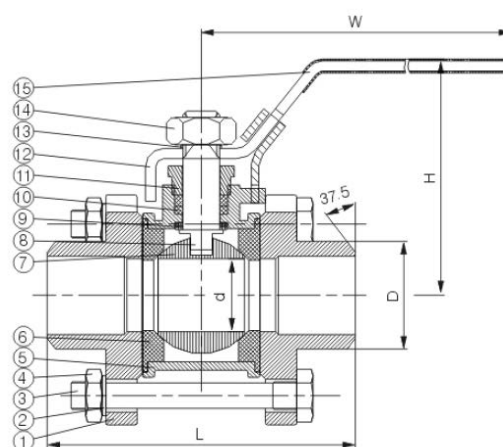
FLOATING BALL VALVE

◆ Butt Welding End

PARTS LIST & MATERIAL

Item	Parts Name	Material
1	Cap	Carbon Steel/Stainless Steel
2	Bolt Washer	Stainless Steel
3	Hex Nut	Stainless Steel
4	Bolt	Stainless Steel
5	Body	Carbon Steel/Stainless Steel
6	Seat	PTFE
7	Ball	Stainless Steel
8	Stem	Stainless Steel
9	Thrust Washer	PTFE
10	Packing	PTFE
11	Gland	Stainless Steel
12	Handle	Stainless Steel
13	Spring Washer	Stainless Steel
14	Stem Nut	Stainless Steel
15	Plastic Cover	Plastic

*More material specifications are available on request.



DIMENSION (Three-piece)

DN	NPS	L	W≈	H≈
8	1/4"	68	90	53
10	3/8"	68	90	53
15	1/2"	74	90	56
20	3/4"	84	108	65
25	1"	94	123	69
32	1 1/4"	110	170	81.5
40	1 1/2"	126	170	86.5
50	2"	147	170	102
65	2 1/2"	185	240	133
80	3"	216	240	133
100	4"	270	280	173

*More dimension specifications are available on request.